









sumitag

With our SUMITAG thermal transfer printers you achieve excellent, very abrasion-resistant printing results that, in combination with the appropriate shrink tube sleeves and ribbons, even meet the requirements of the railways, aviation and military.

	SumiTag™ Product Series	Product Description	Product Specification & Application	Color	Industry Certification & Approvals
CLHX		Tie-On Cable Label Low Smoke	Zero Halogen, Low Toxicity Polyolefin for Extended Safety	White Yellow	EN 45545-2 RoHS
CLXI		Tie-On Cable Label UV Stable	High Durability Polyurethan For UV Stable	White Yellow	RoHS
RPX		Extended Fire Safety Panel Label Adhesive Backed	Electrical Cabinet, Push Button, Patch Panel	White Yellow	EN 45545-2 RoHS
RPL		Adhesive Backed Panel Label	Electrical Cabinet, Push Button, Patch Panel	White Yellow	RoHS
LFC (2:1)		Low Fire Hazard, Low Smoke	Zero Halogen, Low Toxicity Polyolefin	White Yellow	EN 45545-2 RoHS
MIL (2:1)		Very Flexible Polyolefin	SAE-AMS-DTL 23052/5, Class 1	White Yellow Other Available	RoHS



SQUIX Printer
A robust & Industrial
thermal transfer printer



EOS5 Printer
EOS5 thermal transfer
printer



Ribbon
Resin ribbon 2020
series & 510 series



Cutter
Cutter for SQUIX
printer (optional)



Cable markers, labels, thermal transfer printers, software and ribbons. Everything specially tailored to your individual application. The SUMITAG marking system ensures the best results with easy processing. For cable harnesses, switch wires, switch cabinets, metal or plastic housings, nameplates for devices and much more.

Application

ยินดีให้คำปรึกษาการใช้งานใช้ดลากับหน้างานที่มีอยู่หรือให้คำแนะนำการใช้งานใช้ดลาค



Tree - tracking tag
for efficient management and monitoring in carbon credit generation.



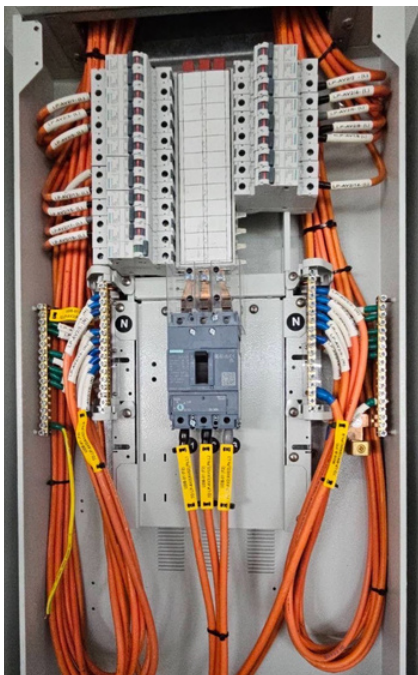
Tag for Cable management
Clear & Easy Identification for Wire Labelling and Cable Bundles



Switch nameplate/ Nameplate
Also able to provide many information regarding the model, serial number, etc.



Durable adhesive asset tags
with barcode QR codes for highly effective asset management.



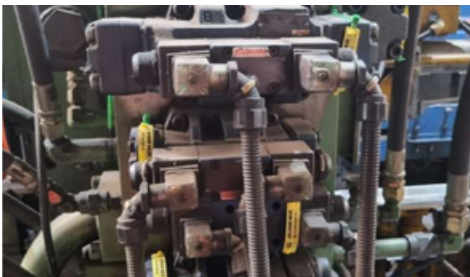
Electrical Panel Labels
Clarify the connections and types of electrical signals that are being used



Electronic parts and appliance tag
Ensure consistent inventory tracking, data capture, and clear-cut product identification



Wire Harness Labels
Identifying curved wires and cables or cables that may become curved



Oil Resistant Labels
Able to withstand extreme temperatures, abrasion, as well as exposure to oils and grease



FEEL FREE TO CONTACT US
TEL: 02-503-4806
094-925-8800
EMAIL: JAC@JAC-NETWORK.COM
LINE: @JACNETWORK
WWW.JAC-NETWORK.COM